

COMMERCIAL LOOK BOOK

FLOR[®]

by Interface[®]



2025



Our area rugs are different. No, really, they are. That's because they're made of carpet tiles. Carpet tiles that combine style, performance, and sustainability for residential and commercial spaces. Offices, conference rooms, and collaborative spaces – we have the bold patterns and on-trend colors for your project.

FLOR is perfect for high-performance commercial environments. Why? Our products are premium. And our design-forward approach to flooring can do it all, like elevating aesthetics and functionality of your space. All with a 15-year warranty. What's even better? Our tiles seamlessly integrate with Interface's flooring systems, giving you a complete solution tailored to your needs.

Unlock endless design possibilities with FLOR at your feet.

- + BEAUTIFUL
- + SMART
- + RESPONSIBLE

Bold Patterns. Colorful Accents. High-End Designs.
Design a wonderfully unique workspace with FLOR.

MADE FOR



PRODUCT AMONG THE WILDFLOWERS COLOR IVY FLOR.COM/AMONG-THE-WILDFLOWERS
PROJECT LOCATION AMZ LAX78 WATER GARDEN TENANT IMPROVEMENT
PHOTO BY HALEY HILL PHOTOGRAPHY DESIGN & ARCHITECTURE BY B+H ARCHITECTS



“

Bold, fun, and unique designs – not many other carpet tile products check these boxes. We love installing FLOR products because they turn mundane commercial settings into beautiful, stylish spaces.

COMMERCIAL INTERIOR RESOURCES
[Learn more at FLOR.com/commercial](https://www.flor.com/commercial)

BEAUTY

MADE FOR

Think smarter,
not harder with
FLORDots™ (TacTiles®)
for easy installation
and guaranteed
customization.



PRODUCT ON THE DOT COLOR BONE / SILVER FLOR.COM/ON-THE-DOT
PROJECT LOCATION TILT CREATIVE + PRODUCTION
PHOTO BY ON THREE PHOTOGRAPHY DESIGN BY CAMPFIRE & CO.



PRODUCT SEEING STARS COLOR BALTIC FLOR.COM/SEEING-STARS
PROJECT LOCATION TILT CREATIVE + PRODUCTION PHOTO BY ON THREE PHOTOGRAPHY DESIGN BY CAMPFIRE & CO.

“

FLOR helps us create custom patterns with ease! The mix of colorways provides both consistency and variety, resulting in a smart and beautiful end-product.

CAMPFIRE & CO.

Learn more at [FLOR.com/commercial](https://www.flor.com/commercial)

COMPLETE SOLUTIONS

MADE FOR



PRODUCT YOU'RE SO VEIN COLOR BEIGE / SILVER PROJECT LOCATION INSURANCE COMPANY
PHOTO BY UPPER LEFT PHOTOGRAPHY DESIGN BY DESIGN 360 INC.



PRODUCT KNIT WIT COLOR CHALK / SILVER
PROJECT LOCATION GOJI PROPERTIES INC.
PHOTO BY JANET KIMBER DESIGN BY DESIGN 360 INC.

CIRCULARITY

Unlock planet-positive style with FLOR. We're all in on creating area rugs that do more than just look good. They do good.

“

FLOR carpet tiles create beautiful area rugs that are good for the Earth. Designed with sustainability in mind, each rug is made with planet positive style, delivering a customizable, recyclable end-product.

DESIGN 360, INC.

Learn more at [FLOR.com/commercial](https://www.flor.com/commercial)

WHY FLOR?

There When You Need It

No minimum order quantity. Ships within 2 business days. Arrives within 5-7 business days. It's that simple.

Work. Play. Repeat.

With all the performance benefits of Interface carpet tile and a 15-year warranty, our rugs are made to work as hard as you do.

Make It Yours

Fit for any sized room, FLOR tiles are simple to clean and easy to replace. And you can choose the colors and style for endless design possibilities.

The Arras Collection

It's all about the details with Arras. Reminiscent of handwoven and flat-weave rugs, these styles use cutting-edge tufting technology to create dynamic pile heights and patterning.



PRODUCT HEMLINE COLOR PEARL FLOR.COM/HEMLINE



 Products with this symbol are made with CQuest™

MADE FOR REDUCING YOUR IMPACT

At FLOR, our rugs are designed with the Earth in mind. From our carbon negative area rug collection to our Return & Recycle Program, our products are made to lower our carbon footprint – and yours.

More Than Just Backing

We offer backings that are designed to move toward a carbon negative future. Our CQuest™ backings are made of post-consumer carpet tiles, bio-based elements, and pre-consumer recycled materials that are net carbon negative, making them good for the Earth.

Sustainable To Our Core

Since 1995, the Interface family of brands has kept millions of pounds of carpet out of landfills each year. We're constantly innovating new methods for making beautiful, smart, and responsible rugs from the moment they're woven to the time they're recycled into something new.

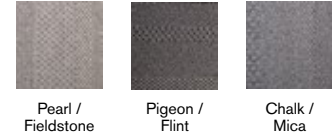


PROJECT LOCATION BROOKS AND COLLIER SHOWROOM
 PHOTO BY ADDIE EANES CONTRACTOR VANGUARD COMMERCIAL FLOORING

Banter

21-1547
 SHOWN IN PEARL / FIELDSTONE

CONSTRUCTION Engaged Tufted Pattern Loop
 DYE METHOD 100% Solution Dye
 BACKING CQuest™GB
 PRODUCT SIZE 19.69 in x 19.69 in (50 cm x 50 cm)
 INSTALL METHODS Monolithic (Straight) or Parquet (Quarter-Turned)

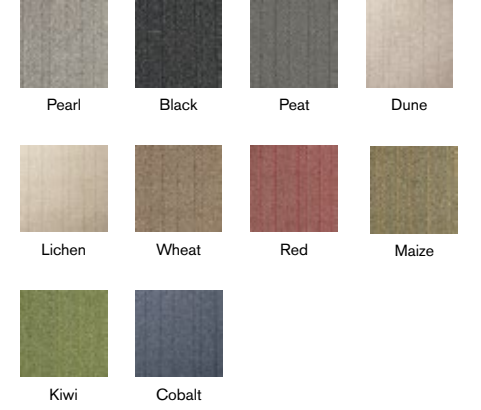


PROJECT LOCATION BROOKS AND COLLIER SHOWROOM
 PHOTO BY ADDIE EANES
 CONTRACTOR VANGUARD COMMERCIAL FLOORING

Tweed Indeed

21-1454
 SHOWN IN PEARL

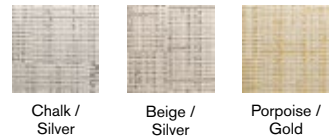
CONSTRUCTION Tufted Textured Loop
 DYE METHOD 100% Solution Dye
 BACKING CQuest™GB
 PRODUCT SIZE 19.69 in x 19.69 in (50 cm x 50 cm)
 INSTALL METHODS Monolithic (Straight) or Parquet (Quarter-Turned)



Knit Wit

21-1528
 SHOWN IN CHALK / SILVER

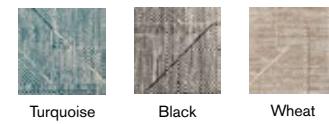
CONSTRUCTION Engaged Tufted Pattern Loop
 DYE METHOD 100% Solution Dye
 BACKING Glasbac
 PRODUCT SIZE 19.69 in x 19.69 in (50 cm x 50 cm)
 INSTALL METHOD Monolithic (Straight)

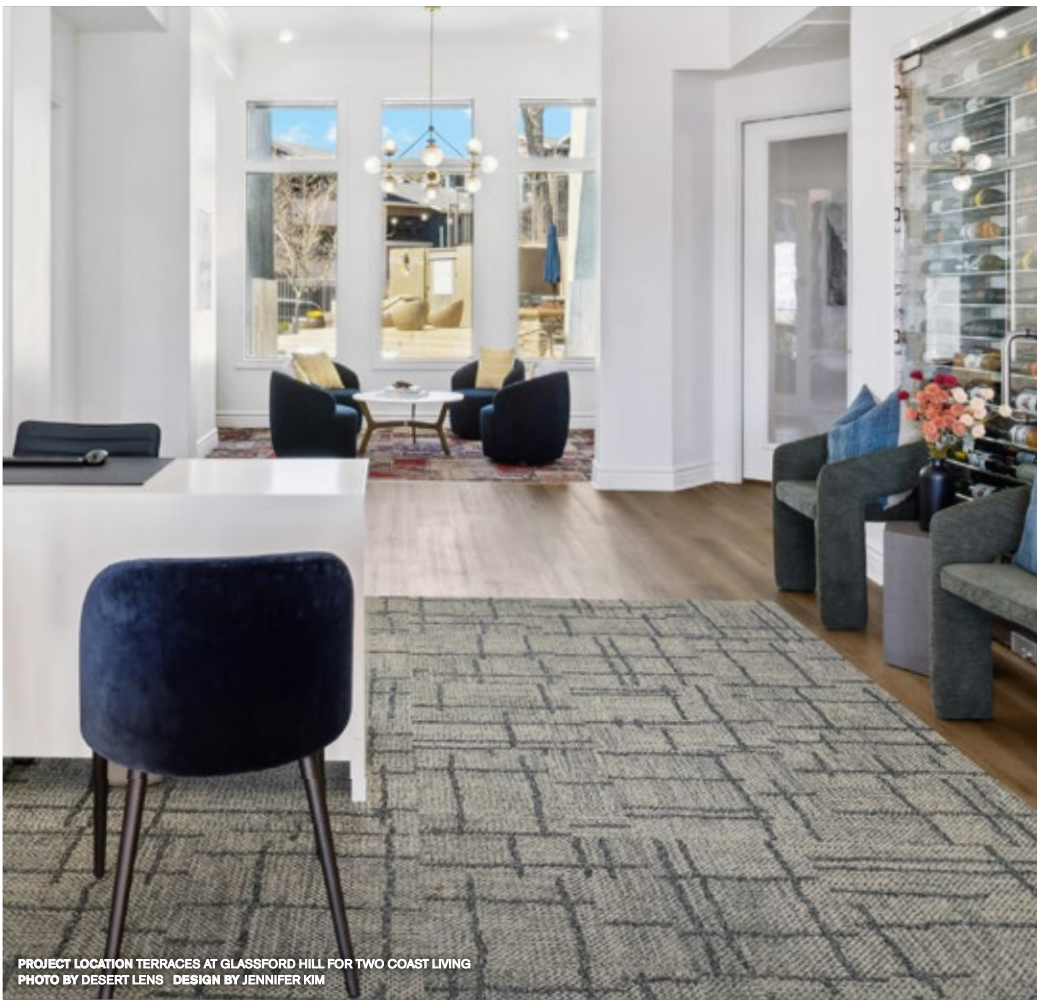


Step By Step

21-1569
 SHOWN IN TURQUOISE

CONSTRUCTION Engaged Tufted Pattern Loop
 DYE METHOD 100% Solution Dye
 BACKING CQuest™GB
 PRODUCT SIZE 19.69 in x 19.69 in (50 cm x 50 cm)
 INSTALL METHOD Monolithic (Straight) or Non-Directional





PROJECT LOCATION TERRACES AT GLASSFORD HILL FOR TWO COAST LIVING
 PHOTO BY DESERT LENS DESIGN BY JENNIFER KIM

Draper

21-1560 

SHOWN IN PEARL / MICA

CONSTRUCTION	Engaged Tufted Pattern Loop
DYE METHOD	100% Solution Dye
BACKING	CQuest™GB
PRODUCT SIZE	19.69 in x 19.69 in (50 cm x 50 cm)
INSTALL METHODS	Monolithic (Straight)



Pearl / Mica Pearl / Fieldstone Topaz



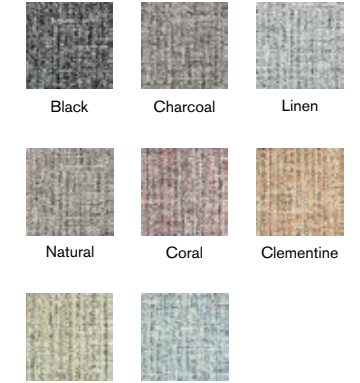
PHOTO BY HALKIN MASON PHOTOGRAPHY

Tailored Touch

21-1450 

SHOWN IN CUSTOM

CONSTRUCTION	Engaged Tufted Pattern Loop
DYE METHOD	100% Solution Dye
BACKING	CQuest™GB
PRODUCT SIZE	19.69 in x 19.69 in (50 cm x 50 cm)
INSTALL METHODS	Monolithic (Straight)



Black Charcoal Linen
 Natural Coral Clementine
 Kiwi Light Blue

Savile Row

21-1541 

SHOWN IN BERRY

CONSTRUCTION	Engaged Tufted Sheared
DYE METHOD	100% Solution Dye
BACKING	CQuest™GB
PRODUCT SIZE	19.69 in x 19.69 in (50 cm x 50 cm)
INSTALL METHOD	Non-Directional



Berry Titanium Cobalt



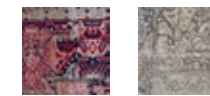
PROJECT LOCATION MITSUBISHI HC CAPITAL AMERICA
 PHOTO BY RANDY HOEPNER PHOTOGRAPHY
 ARCHITECTURE BY PLANFORCE, INC.

Nizhoni Patchwork

21-1424 

SHOWN IN CRIMSON

CONSTRUCTION	Engaged Tufted Sheared
DYE METHOD	100% Solution Dye
BACKING	CQuest™GB
PRODUCT SIZE	19.69 in x 19.69 in (50 cm x 50 cm)
INSTALL METHOD	Non-Directional



Crimson Porpoise



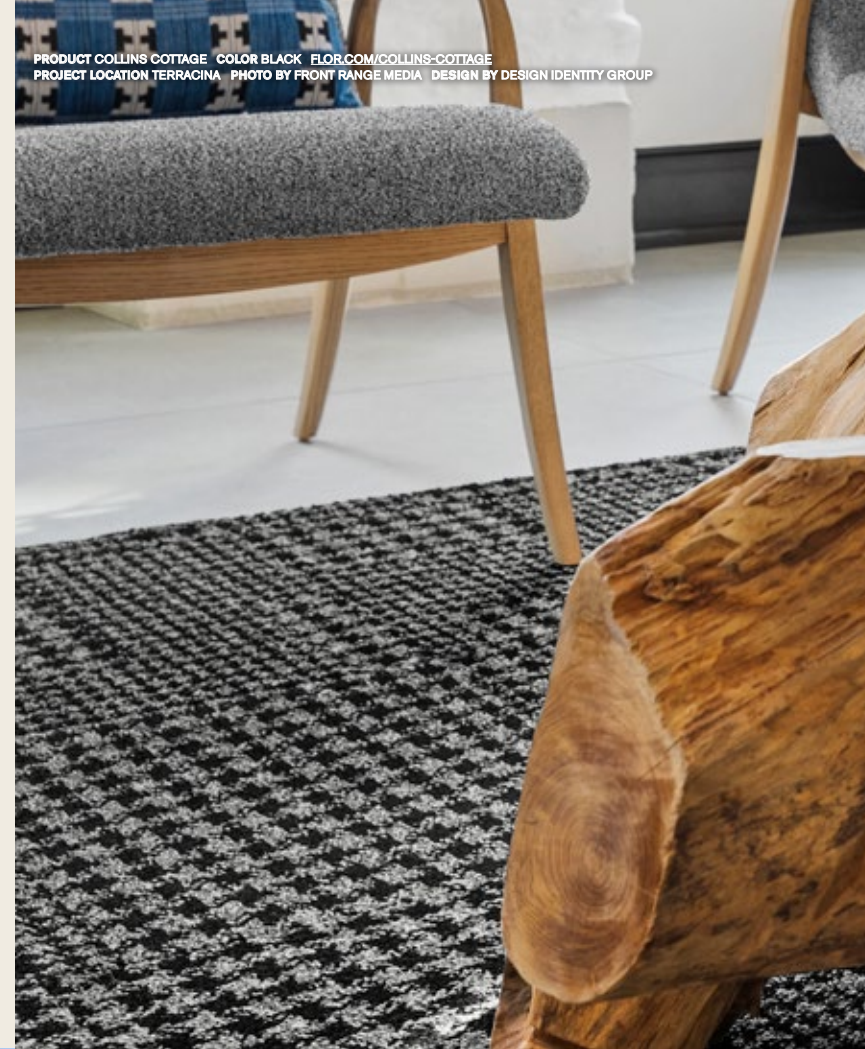
PROJECT LOCATION TERRACES AT GLASSFORD HILL FOR TWO COAST LIVING
 PHOTO BY DESERT LENS DESIGN BY JENNIFER KIM

MADE FOR

CLIENT:

Design Identity Group

Renovating a space requires inspiration and creativity. That's Design Identity Group's specialty. For its Terracina, The Heights at Park Lane, and Vantage Pointe projects, the firm selected products with vibrant colors to create memorable, energetic spaces. FLOR's Collins Cottage, Remembrance, and Hemline products helped establish unique interiors, designed for inspiration.



PRODUCT COLLINS COTTAGE COLOR BLACK FLOR.COM/COLLINS-COTTAGE
PROJECT LOCATION TERRACINA PHOTO BY FRONT RANGE MEDIA DESIGN BY DESIGN IDENTITY GROUP



PRODUCT REMEMBRANCE COLOR FUCHSIA FLOR.COM/REMEMBRANCE
PROJECT LOCATION TERRACINA PHOTO BY FRONT RANGE MEDIA DESIGN BY DESIGN IDENTITY GROUP



PRODUCT HEMLINE COLOR FUNT FLOR.COM/HEMLINE
PROJECT LOCATION THE HEIGHTS AT PARK LANE
PHOTO BY REAL ESTATE PHOTOGRAPHY DALLAS
DESIGN BY DESIGN IDENTITY GROUP

“

FLOR products are simple for our contractors to install, and the patterns and colors can be interchanged to create a one-of-a-kind design.

CAROLINE KOVAC, PRINCIPAL OF DESIGN IDENTITY GROUP
Learn more at [FLOR.com/commercial](https://www.flor.com/commercial)

INSPIRATION



PROJECT LOCATION EMBER
 PHOTO BY KIM RODGERS
 ARCHITECTURE & DESIGN BY BLITZ


It's Snow Problem

21-1412 
 SHOWN IN BONE

CONSTRUCTION Engaged Tufted Pattern Loop
 DYE METHOD 100% Solution Dye
 BACKING CQuest™GB
 PRODUCT SIZE 19.69 in x 19.69 in (50 cm x 50 cm)
 INSTALL METHOD Non-Directional



Leaps And Bounds

21-1559 
 SHOWN IN SADDLE

CONSTRUCTION Engaged Tufted Pattern Loop
 DYE METHOD 100% Solution Dye
 BACKING CQuest™GB
 PRODUCT SIZE 19.69 in x 19.69 in (50 cm x 50 cm)
 INSTALL METHODS Monolithic (Straight) or Non-Directional



SHOWN WITH INTERFACE THIRD SPACE 306 IN OAT

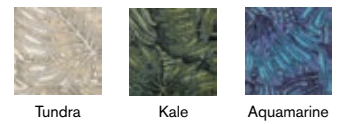


PHOTO BY GARRETT ROWLAND

Palm Reader

21-1467
 SHOWN IN TUNDRA


CONSTRUCTION Engaged Tufted Sheared
 DYE METHOD 100% Solution Dye
 BACKING Glasbac
 PRODUCT SIZE 19.69 in x 19.69 in (50 cm x 50 cm)
 INSTALL METHOD Non-Directional Installation



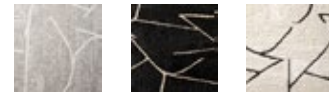


PROJECT LOCATION FORWARD TILT SHOWROOM
PHOTO BY KYLE ZIRKUS PHOTO
DESIGN BY FORWARD TILT

Terrain

21-1534 
SHOWN IN CHALK

CONSTRUCTION Engaged Tufted Sheared
DYE METHOD 100% Solution Dye
BACKING CQuest™GB
PRODUCT SIZE 19.69 in x 19.69 in (50 cm x 50 cm)
INSTALL METHODS Monolithic (Straight)



Chalk Black Bone



Pearl Coral



PROJECT LOCATION COX & PALMER
PHOTO BY CHRIS J. DICKSON
DESIGN BY DESIGN 360 INC.

London Twill

21-1504 
SHOWN IN MICA

CONSTRUCTION Tufted Pattern Loop
DYE METHOD 100% Solution Dye
BACKING CQuest™GB
PRODUCT SIZE 19.69 in x 19.69 in (50 cm x 50 cm)
INSTALL METHODS Monolithic (Straight)



Mica Flint Flint / Pearl



Pigeon Cocoa Topaz



Dune Marine

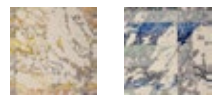
You're So Vein

21-1542 
SHOWN IN BEIGE / SILVER

CONSTRUCTION Engaged Tufted Pattern Loop
DYE METHOD 100% Solution Dye
BACKING CQuest™GB
PRODUCT SIZE 19.69 in x 19.69 in (50 cm x 50 cm)
INSTALL METHOD Non-Directional



Beige / Silver Spice / Silver Coral / Silver



Maize / Silver Cobalt / Silver

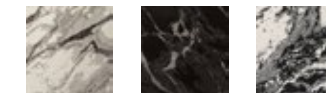


PROJECT LOCATION INSURANCE COMPANY
PHOTO BY UPPER LEFT PHOTOGRAPHY
DESIGN BY DESIGN 360 INC.

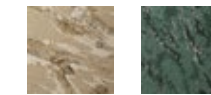
Zera

21-1555
SHOWN IN BONE

CONSTRUCTION Engaged Tufted Sheared
DYE METHOD 100% Solution Dye
BACKING Glasbac
PRODUCT SIZE 19.69 in x 19.69 in (50 cm x 50 cm)
INSTALL METHOD Non-Directional



Bone Black Bone / Black



Pearl Pine



PROJECT LOCATION 1650 TYSONS BLVD, 3RD FLOOR AMENITIES
PHOTO BY DAVID BELGIN ARCHITECTURE & DESIGN BY THE M GROUP

MADE FOR

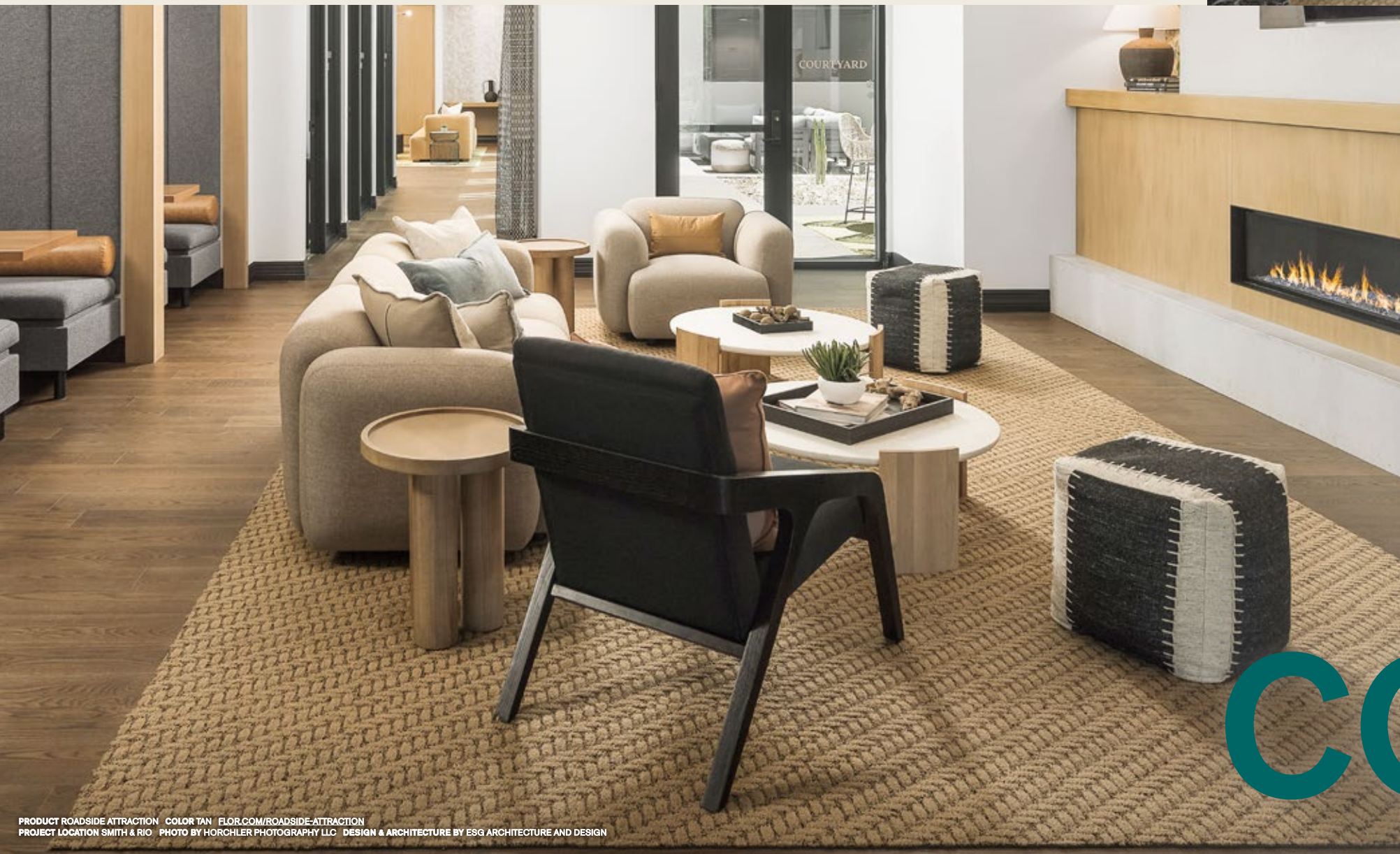
CLIENT:

ESG Architecture & Design

Relaxing spaces need to be both welcoming (in other words, cozy) and hardworking. The Smith & Rio apartment community achieves this harmony to create a southwest-inspired oasis. ESG Architecture and Design chose Roadside Attraction and Mined And Yours to maintain a soothing aesthetic that easily blends with other finish elements. The result is a neutral backdrop for larger amenity spaces.



PRODUCT MINED & YOURS COLOR GREY / SILVER FLOR.COM/MINED-AND-YOURS
PROJECT LOCATION SMITH & RIO PHOTO BY HORCHLER PHOTOGRAPHY LLC DESIGN & ARCHITECTURE BY ESG ARCHITECTURE AND DESIGN



“

We selected area rugs that are timeless and long-lasting, which aligns with our overall project goals perfectly. Holding up to heavy foot traffic in commercial spaces is a big part of why we chose FLOR.

ESG ARCHITECTURE & DESIGN

Learn more at [FLOR.com/commercial](https://www.flor.com/commercial)

COMMUNITY



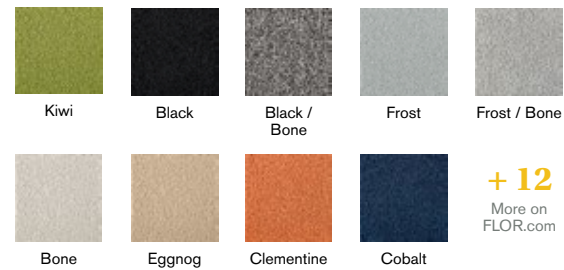
PROJECT LOCATION SHINESTY HQ
PHOTO BY JESS BLACKWELL PHOTOGRAPHY
DESIGN BY MAXIMALIST

In The Deep

21-1403
SHOWN IN KIWI

CONSTRUCTION Tufted Cut Pile
DYE METHOD 100% Solution Dye
BACKING Glasbac
PRODUCT SIZE 19.69 in x 19.69 in (50 cm x 50 cm)
INSTALL METHODS Monolithic (Straight)

SHOWN WITH INTERFACE MONOCHROME IN RED



PROJECT LOCATION OKTA COMMONS
PHOTO BY BRUCE DAMONTE
ARCHITECTURE & DESIGN BY DESIGN BLITZ

Vintage Vibe

21-1385
SHOWN IN FLINT / SILVER

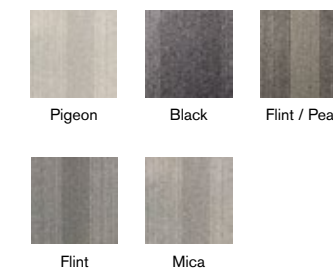
CONSTRUCTION Engaged Tufted Sheared
DYE METHOD 100% Solution Dye
BACKING CQuest™GB
PRODUCT SIZE 19.69 in x 19.69 in (50 cm x 50 cm)
INSTALL METHOD Parquet (Quarter-Turned),
Monolithic (Straight) or
Non-Directional



Ticket To Ride

21-1523
SHOWN IN PIGEON

CONSTRUCTION Engaged Tufted Pattern Loop
DYE METHOD 100% Solution Dye
BACKING CQuest™GB
PRODUCT SIZE 19.69 in x 19.69 in (50 cm x 50 cm)
INSTALL METHOD Parquet (Quarter-Turned)



PROJECT LOCATION ADA FAMILY OFFICE
PHOTO BY DAVID DANIELE ARCHITECTURE & DESIGN BY VIA DESIGN



PROJECT LOCATION ARRIVE MICHIGAN AVENUE
PHOTO BY KASIA VETTER DESIGN BY KDI DESIGN

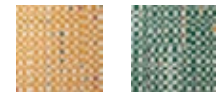
Check it Out

21-1553
SHOWN IN BLACK

CONSTRUCTION	Engaged Tufted Sheared
DYE METHOD	100% Solution Dye
BACKING	CQuest™GB
PRODUCT SIZE	19.69 in x 19.69 in (50 cm x 50 cm)
INSTALL METHOD	Monolithic (Straight)



Black Stone Pearl



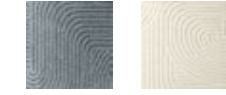
Marigold Emerald



Curves You Right

21-1578
SHOWN IN DUSTY BLUE

CONSTRUCTION	Engaged Tufted Sheared
DYE METHOD	100% Solution Dye
BACKING	CQuest™GB
PRODUCT SIZE	19.69 in x 19.69 in (50 cm x 50 cm)
INSTALL METHOD	Monolithic (Straight)



Dusty Blue Bone



Blush Eggnog

Dappled Daylight

21-1446
SHOWN IN COBALT

CONSTRUCTION	Engaged Tufted Pattern Loop
DYE METHOD	100% Solution Dye
BACKING	CQuest™GB
PRODUCT SIZE	19.69 in x 19.69 in (50 cm x 50 cm)
INSTALL METHODS	Non-Directional



Cobalt Black Peat



Titanium Pigeon Marigold



Teal



PROJECT LOCATION CORTLAND ON BLAKE, MULTI-FAMILY CLUB
PHOTO & DESIGN BY CORTLAND MARKETING & DESIGN

Fully Barked

21-1409
SHOWN IN CHALK

CONSTRUCTION	Tufted Sheared
DYE METHOD	100% Solution Dye
BACKING	CQuest™GB
PRODUCT SIZE	19.69 in x 19.69 in (50 cm x 50 cm)
INSTALL METHOD	Monolithic (Straight) or Parquet (Quarter-Turned)



Chalk Stratus Titanium



Fog Pigeon Frost



Mahogany Oyster Beige



Marsh Tundra Sage



PROJECT LOCATION BELLYARD HOTEL PHOTO BY CALEB JONES
DESIGN BY UNCOMMON STUDIOS ARCHITECTURE BY NELSON

CLIENT:

FAM Design

The design of the Jaguar Bolera restaurant reflects the thinking behind the concept: bold, vibrant, and unexpected. FAM Design selected Parallel Reality and Doe Re Mi to bring together the contrasting elements in the room, providing both visual interest and harmony. The result is a playful, eclectic atmosphere that nods to the space's 1950s design inspiration.



PHOTO BY ANNA ROUTH BARZIN



PRODUCT DOE RE MI COLOR SABLE FLOR.COM/DOE-RE-MI
PROJECT LOCATION JAGUAR BOLERA RALEIGH PHOTO BY KYLA CHAMBERS DESIGN BY FAM DESIGN

MADE FOR THE UNEXPECTED



PRODUCT PARALLEL REALITY COLOR BURGUNDY FLOR.COM/PARALLEL-REALITY
PROJECT LOCATION JAGUAR BOLERA RALEIGH PHOTO BY KYLA CHAMBERS DESIGN BY FAM DESIGN

“

FLOR consistently offers on-trend design styles and colors that can be difficult to find with other rug providers. With its wide variety of colors and patterns, FLOR provided us with the options needed to bring to life our unique design concept for a high-use space.

FAM DESIGN

Learn more at [FLOR.com/commercial](https://www.flor.com/commercial)



PROJECT LOCATION CAPILANO UNIVERSITY SHIPYARDS
PHOTO BY UPPER LEFT PHOTOGRAPHY
DESIGN & ARCHITECTURE BY DIALOG

Down to Earth

21-1402
SHOWN IN GRASS

CONSTRUCTION Engaged Tufted Pattern Loop
DYE METHOD 100% Solution Dye
BACKING Glasbac
PRODUCT SIZE 19.69 in x 19.69 in (50 cm x 50 cm)
INSTALL METHOD Parquet (Quarter-Turned) or Non-Directional

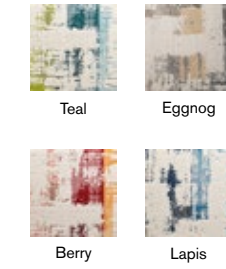


PROJECT LOCATION AUBURN COMMUNITY CHURCH
PHOTO & DESIGN BY STUDIO STWELVE
ARCHITECTURE BY LIVE DESIGN GROUP

Splish Splash

21-1529
SHOWN IN TEAL

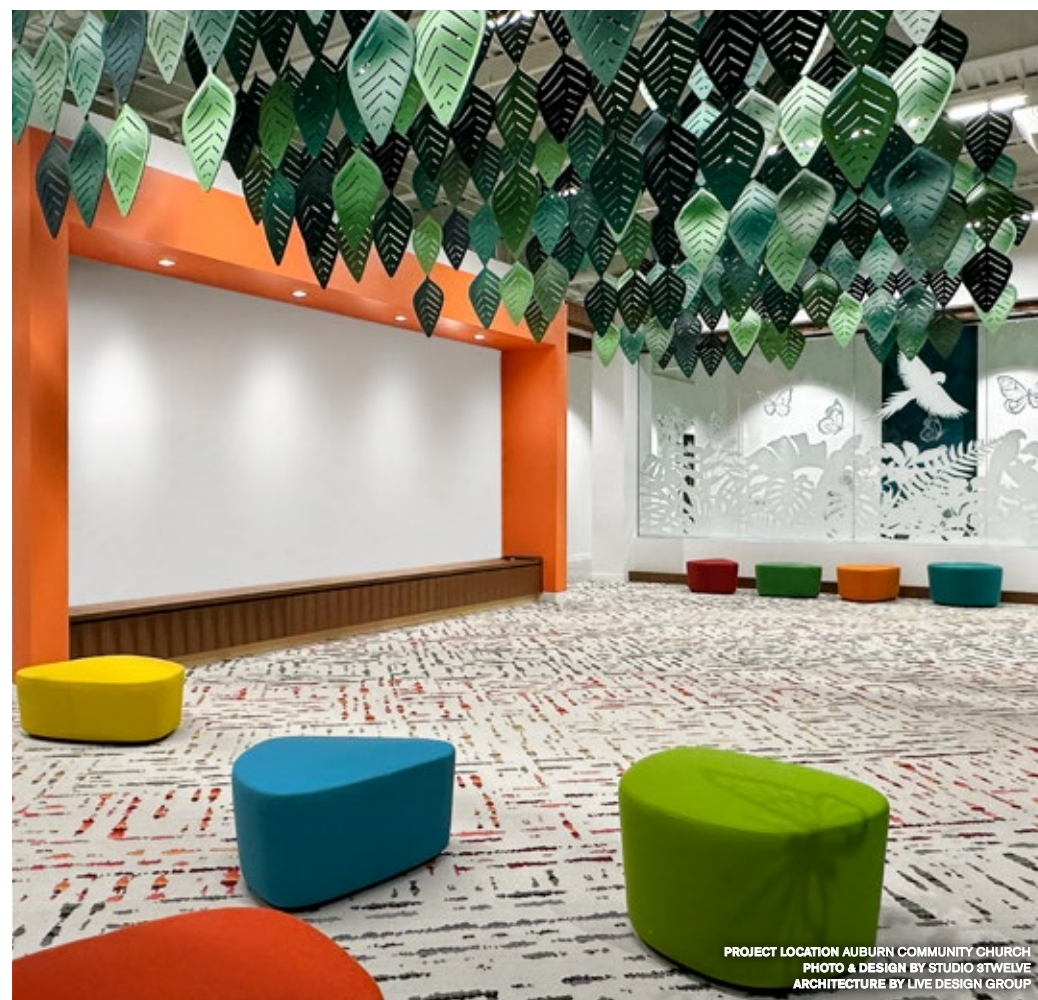
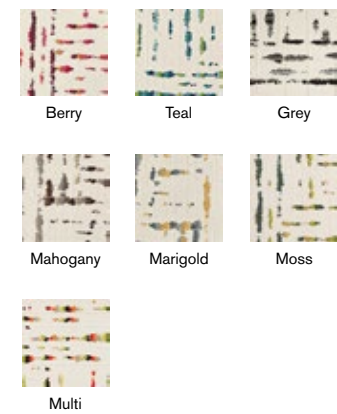
CONSTRUCTION Engaged Tufted Pattern Loop
DYE METHOD 100% Solution Dye
BACKING CQuest™GB
PRODUCT SIZE 19.69 in x 19.69 in (50 cm x 50 cm)
INSTALL METHODS Monolithic (Straight) or Non-Directional



Lilting

21-1425
SHOWN IN CUSTOM

CONSTRUCTION Engaged Tufted Pattern Loop
DYE METHOD 100% Solution Dye
BACKING GlasBac
PRODUCT SIZE 19.69 in x 19.69 in (50 cm x 50 cm)
INSTALL METHOD Non-Directional



PROJECT LOCATION AUBURN COMMUNITY CHURCH
PHOTO & DESIGN BY STUDIO STWELVE
ARCHITECTURE BY LIVE DESIGN GROUP

Rue

21-1459
SHOWN IN CUSTOM

CONSTRUCTION Engaged Tufted Pattern Loop
DYE METHOD 100% Solution Dye
BACKING CQuest™GB
PRODUCT SIZE 19.69 in x 19.69 in (50 cm x 50 cm)
INSTALL METHOD Non-Directional




SHOWN WITH INTERFACE PAVER IN FLINT



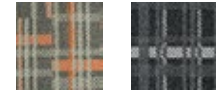
PROJECT LOCATION UNIVERSITY OF MIAMI STUDENT VILLAGE
PHOTO BY CHAD BAUMER
DESIGN & ARCHITECTURE BY DLR GROUP



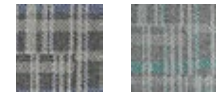
Scottish Sett

21-1449 
 SHOWN IN NATURAL

CONSTRUCTION Engaged Tufted Pattern Loop
 DYE METHOD 100% Solution Dye
 BACKING CQuest™GB
 PRODUCT SIZE 19.69 in x 19.69 in (50 cm x 50 cm)
 INSTALL METHODS Non-Directional



Natural Black




Charcoal Flannel

SHOWN WITH INTERFACE WW880 IN NATURAL LOAM



PROJECT LOCATION ATLANTA VETERANS AFFAIRS REGIONAL OFFICE
 PHOTO BY FARM KID STUDIOS
 DESIGN & ARCHITECTURE BY NELSON WORLDWIDE

Crosswise

21-1505 
 SHOWN IN MICA

CONSTRUCTION Engaged Tufted Pattern Loop
 DYE METHOD 100% Solution Dye
 BACKING CQuest™GB
 PRODUCT SIZE 19.69 in x 19.69 in (50 cm x 50 cm)
 INSTALL METHOD Monolithic (Straight)

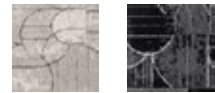


Mica Flint Pearl

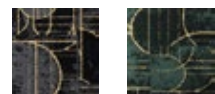
Sidecar

21-1567 
 SHOWN IN CHALK / SILVER

CONSTRUCTION Engaged Tufted Sheared
 DYE METHOD 100% Solution Dye
 BACKING CQuest™GB
 PRODUCT SIZE 19.69 in x 19.69 in (50 cm x 50 cm)
 INSTALL METHODS Non-Directional



Chalk / Silver Flint / Silver



Flint / Gold Pine / Gold

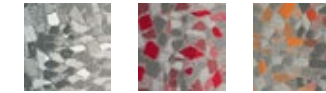


PROJECT LOCATION SIMEAD CAPITAL MANAGEMENT
 PHOTO BY KYLE ZIRKUS PHOTO
 DESIGN BY AJANTA DESIGN

Stone Course

21-1460 
 SHOWN IN GREY / STONE

CONSTRUCTION Loop Pile
 DYE METHOD 100% Solution Dye
 BACKING CQuest™GB
 PRODUCT SIZE 19.69 in x 19.69 in (50 cm x 50 cm)
 INSTALL METHOD Non-Directional



Grey / Stone Red / Stone Orange / Stone



Yellow / Stone Green / Stone Teal / Stone



Purple / Stone



Made For Teamwork

Ready to kickstart a new project? Need help with a design challenge? The Interface Design Studio can help. This complimentary service not only sets us apart from the rest but provides you with a platform to make your rug dreams come true. Work one-on-one with our experienced design team to create your perfect solution.

INTERFACE DESIGN STUDIO



PRODUCT TURKISH SMOKE COLOR PIGEON FLOR.COM/TURKISH-SMOKE
PROJECT LOCATION VANTAGE POINTE PHOTO BY CHRISTINA WOODS DESIGN BY DESIGN IDENTITY GROUP



PRODUCT MADE YOU LOOK COLOR FITTED & FLECKED FLOR.COM/MADE-YOU-LOOK
PROJECT LOCATION DOBBS COMMON TABLE AT EMORY UNIVERSITY
PHOTO BY NIGEL MARSON DESIGN BY SQUARE FEET STUDIO

Made For Customization

Inspiration made just for you. That's the Interface Design Studio. We provide tailor-made service crafted with your customers in mind. From designing an entire floorplan to developing custom colors, we've got you covered.

Why wait? Contact your Account Executive or our dedicated FLOR Commercial team today.

866.481.3164 | [FLOR.COM/COMMERCIAL](https://www.flor.com/commercial)

PRODUCT MOD COW COLOR TAN FLOR.COM/MOD-COW
PROJECT LOCATION DOBBS COMMON TABLE AT EMORY UNIVERSITY
PHOTO BY NIGEL MARSON DESIGN BY SQUARE FEET STUDIO

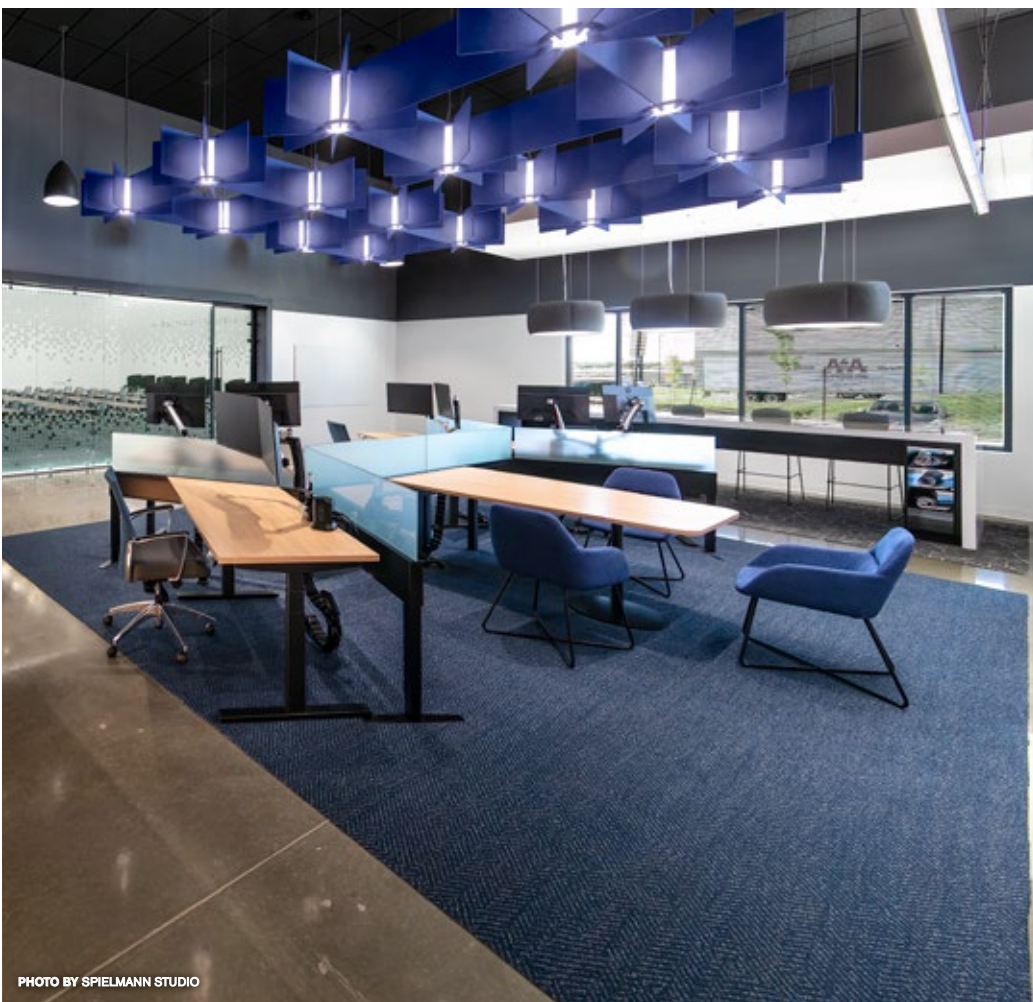
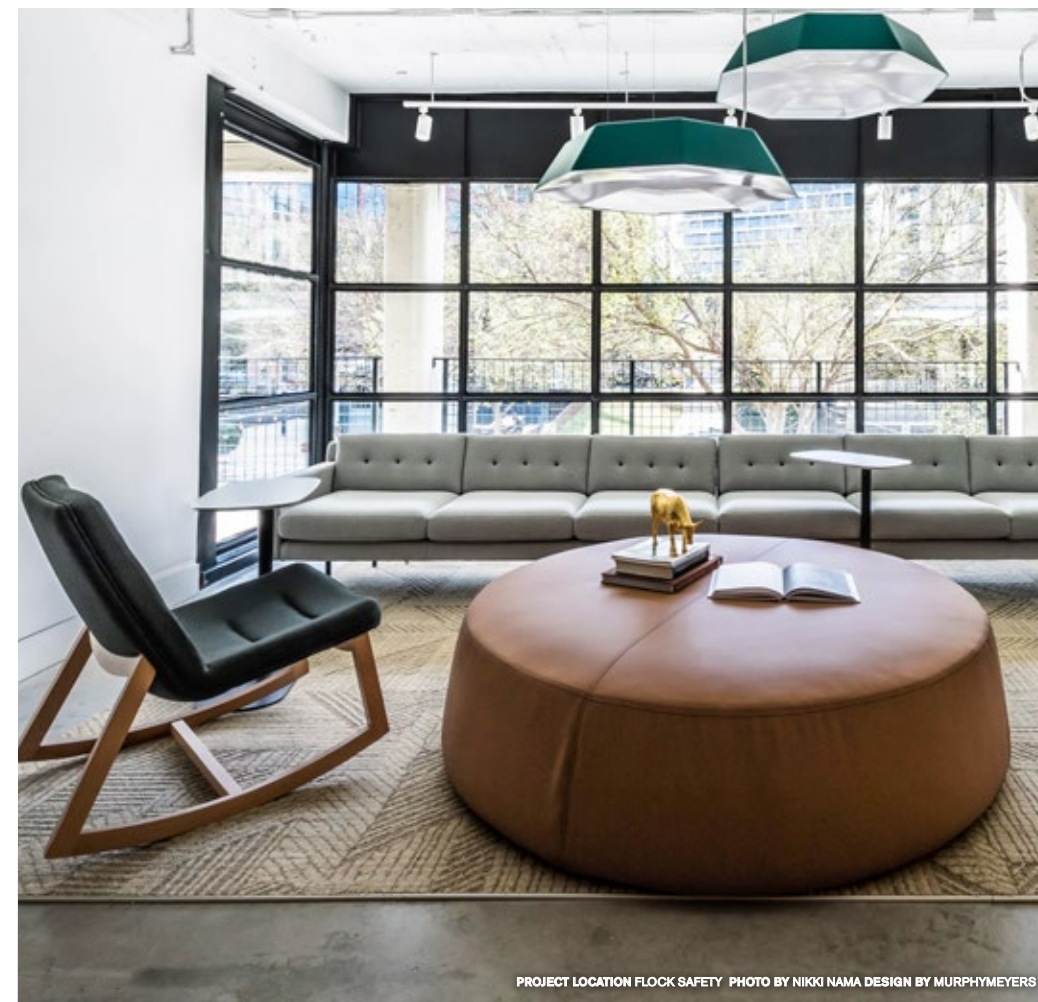
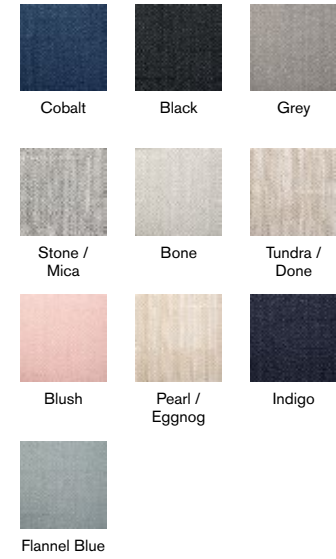


PHOTO BY SPIELMANN STUDIO

Open Invitation

21-1543
SHOWN IN COBALT

CONSTRUCTION Engaged Tufted Pattern Loop
DYE METHOD 100% Solution Dye
BACKING CQuest™GB
PRODUCT SIZE 19.69 in x 19.69 in (50 cm x 50 cm)
INSTALL METHODS Monolithic (Straight)

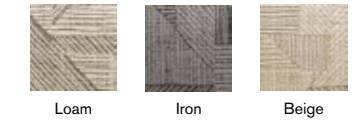


PROJECT LOCATION FLOCK SAFETY PHOTO BY NIKKI NAMA DESIGN BY MURPHYMAYERS

Hard Lines

21-1526
SHOWN IN LOAM

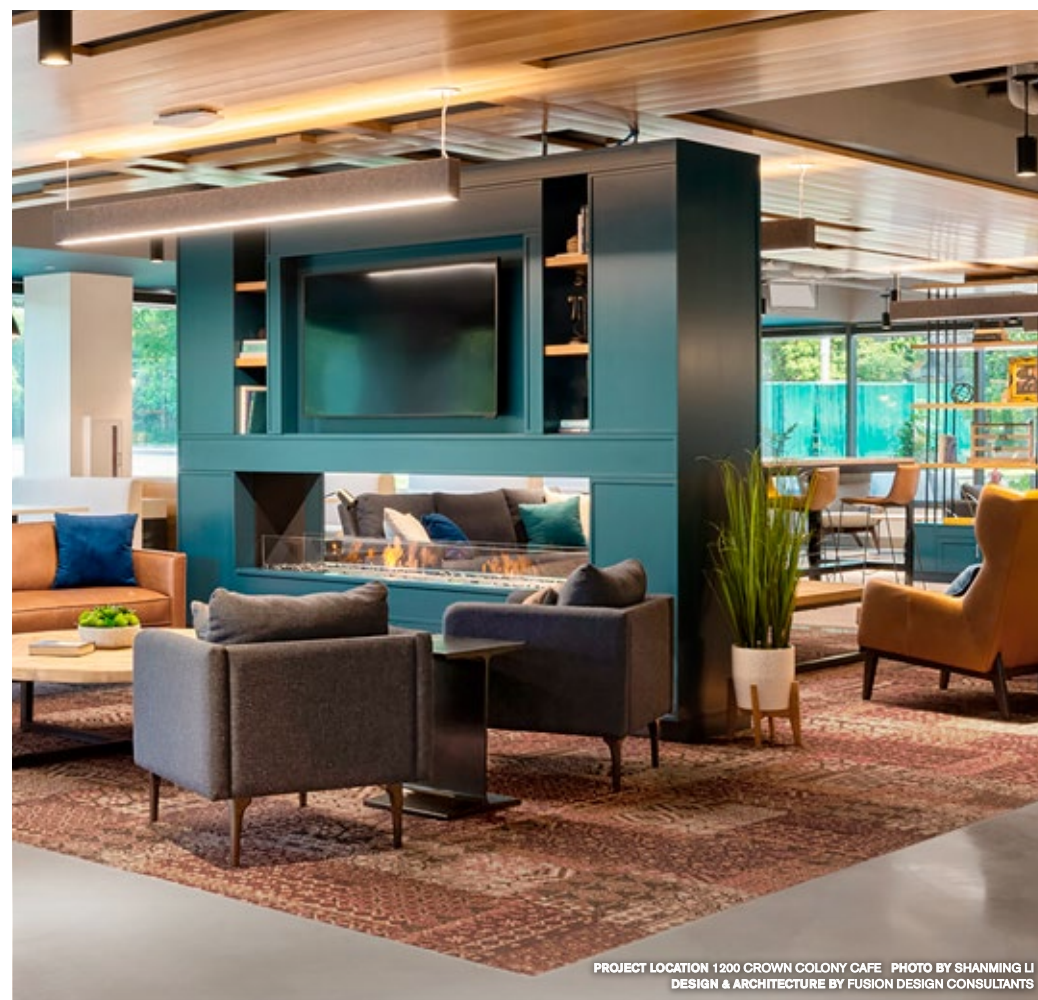
CONSTRUCTION Engaged Tufted Sheared
DYE METHOD 100% Solution Dye
BACKING GlasBac
PRODUCT SIZE 19.69 in x 19.69 in (50 cm x 50 cm)
INSTALL METHODS Monolithic (Straight) or Non-Directional



Oasis Retreat

21-1455
SHOWN IN MAHOGANY

CONSTRUCTION Engaged Tufted Sheared
DYE METHOD 100% Solution Dye
BACKING CQuest™GB
PRODUCT SIZE 19.69 in x 19.69 in (50 cm x 50 cm)
INSTALL METHOD Non-Directional

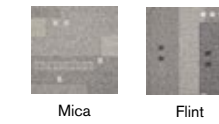


PROJECT LOCATION 1200 CROWN COLONY CAFE PHOTO BY SHANMING LI
DESIGN & ARCHITECTURE BY FUSION DESIGN CONSULTANTS

Haywood

21-1500
SHOWN IN MICA

CONSTRUCTION Tufted Pattern Loop
DYE METHOD 100% Solution Dye
BACKING CQuest™GB
PRODUCT SIZE 19.69 in x 19.69 in (50 cm x 50 cm)
INSTALL METHOD Monolithic (Straight)

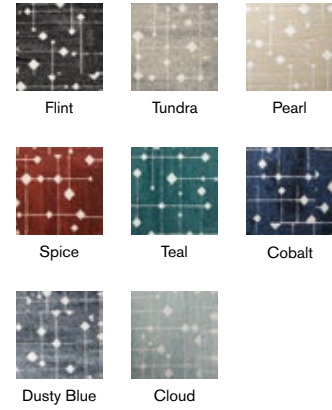




Hollin Hills

21-1479
 SHOWN IN FLINT

CONSTRUCTION Engaged Tufted Sheared
 DYE METHOD 100% Solution Dye
 BACKING CQuest™GB
 PRODUCT SIZE 19.69 in x 19.69 in (50 cm x 50 cm)
 INSTALL METHOD Non-Directional



PROJECT LOCATION VYNE ON HAVEN
 PHOTO BY PETER MCCULLOUGH PHOTO + DRONE
 DESIGN & ARCHITECTURE BY RYAN A+E, INC.

Photo by Kimberly Gavin Photography



Rising Star

21-1515
 SHOWN IN FLINT

CONSTRUCTION Engaged Tufted Pattern Loop
 DYE METHOD 100% Solution Dye
 BACKING GlasBac
 PRODUCT SIZE 19.69 in x 19.69 in (50 cm x 50 cm)
 INSTALL METHOD Monolithic (Straight)

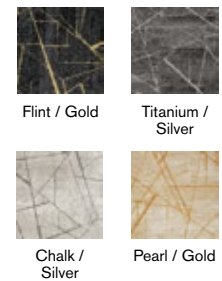


PROJECT LOCATION CEMEX
 PHOTO BY KYLE ZIRKUS PHOTO DESIGN BY CORGAN

Chasing Pavement

21-1484
 SHOWN IN FLINT / GOLD

CONSTRUCTION Engaged Tufted Sheared
 DYE METHOD 100% Solution Dye
 BACKING CQuest™GB
 PRODUCT SIZE 19.69 in x 19.69 in (50 cm x 50 cm)
 INSTALL METHODS Non-Directional



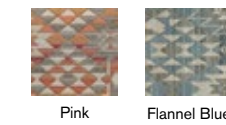
PROJECT LOCATION REPUBLIC NATIONAL DISTRIBUTING COMPANY
 PHOTO BY NIKKI NAMA DESIGN BY MURPHYMEYERS

Photo by JDL Corporate Interiors

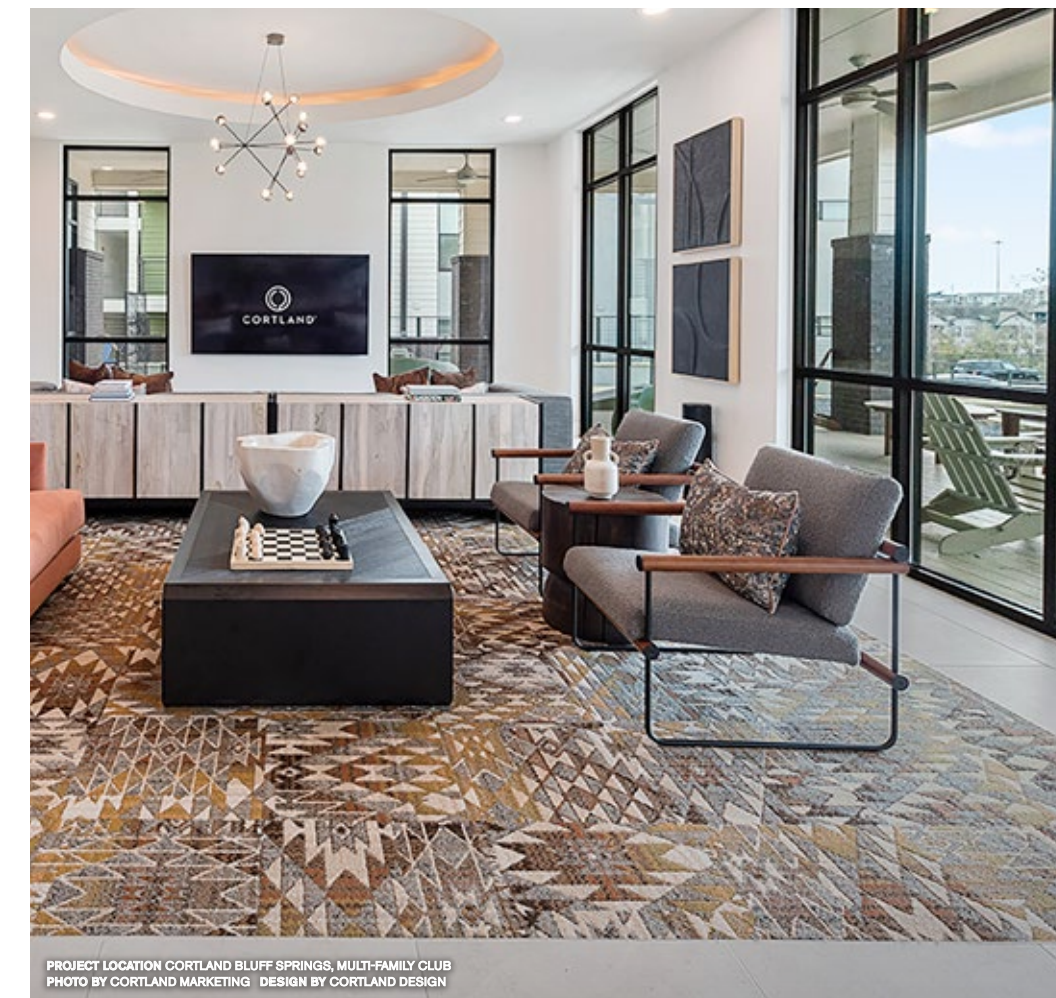
American Treasure

21-1461
 SHOWN IN CUSTOM

CONSTRUCTION Engaged Tufted Pattern Loop
 DYE METHOD 100% Solution Dye
 BACKING CQuest™GB
 PRODUCT SIZE 19.69 in x 19.69 in (50 cm x 50 cm)
 INSTALL METHOD Monolithic (Straight)



BACK COVER PRODUCT TUXEDO POCKET COLOR PEAT FLOR.COM/TUXEDO-POCKET
 PROJECT LOCATION D'YOVILLE UNIVERSITY ADMISSIONS SUITE
 PHOTO BY THREE SIXTY VIEWS PHOTOGRAPHY & VIDEOGRAPH
 DESIGN & ARCHITECTURE BY SILVESTRI ARCHITECTS



PROJECT LOCATION CORTLAND BLUFF SPRINGS, MULTI-FAMILY CLUB
 PHOTO BY CORTLAND MARKETING DESIGN BY CORTLAND DESIGN

READY TO START YOUR PROJECT?



866.481.3164



FLORorders@FLOR.com
or email your Interface Account Executive



[FLOR.com/commercial](https://www.flor.com/commercial)
for more information, styles, and colors

2025 Commercial Look Book

